

Warren Munroe,
Population Analysis,
763 Beach Road,
Qualicum Beach, BC, V9K 1S2

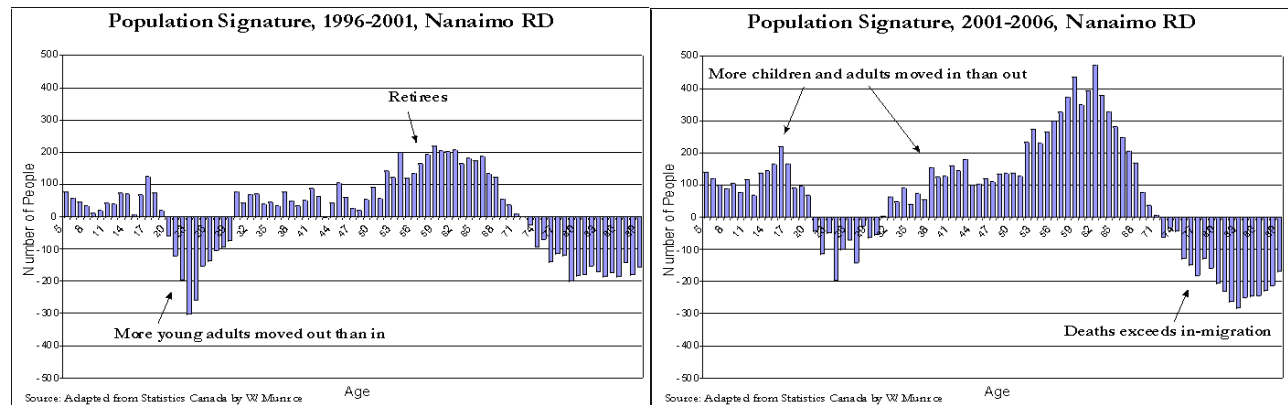
January 10, 2012

Open letter to British Columbia Regional Districts

To whom it may concern,

In February 2012, the 2011 Census results will be released by Statistics Canada. While the Census provides total population and dwelling numbers, analysis reveals important information not provided in the census release. For example, my “Population Signature” charts highlight net migration between census years of people by single year of age.

The following Population Signature charts for the Nanaimo Regional District show the differences between 1996 to 2001 and between 2001 to 2006. In the latter time period, fewer young adults, 18 to 25 years of age, moved out of the region, and more families (children of school age, 5 to 17, and adults of working age, 26 to 55), as well as retirees, moved in. What will the 2011 census reveal for your Regional District?



Population analysis provides the foundation upon which social and economic activity can be examined and forecasted. Analyses of the factors influencing the components of population change (births, deaths, and in and out migration by age and sex) allows insights into changing demands on public and private services, including opening and closing of education and health facilities, as well as residential and non residential construction, transportation, electrical generation, etc.

Since 1996, I have studied population change and its influence on communities, large and small. Having worked closely with Statistics Canada while doing my graduate degree in Ottawa, and having worked for BC Stats as the Population Analyst and provincial expert on migration to the local level, I have extensively examined population statistics and the factors that influence population change.

Please accept my invitation to discuss preparations for the 2011 Canada Census and other services.

Yours truly,

W. Munroe
Warren Munroe

250-594-4322

wmpopulationanalysis@shaw.ca

www.wminfomatics.com